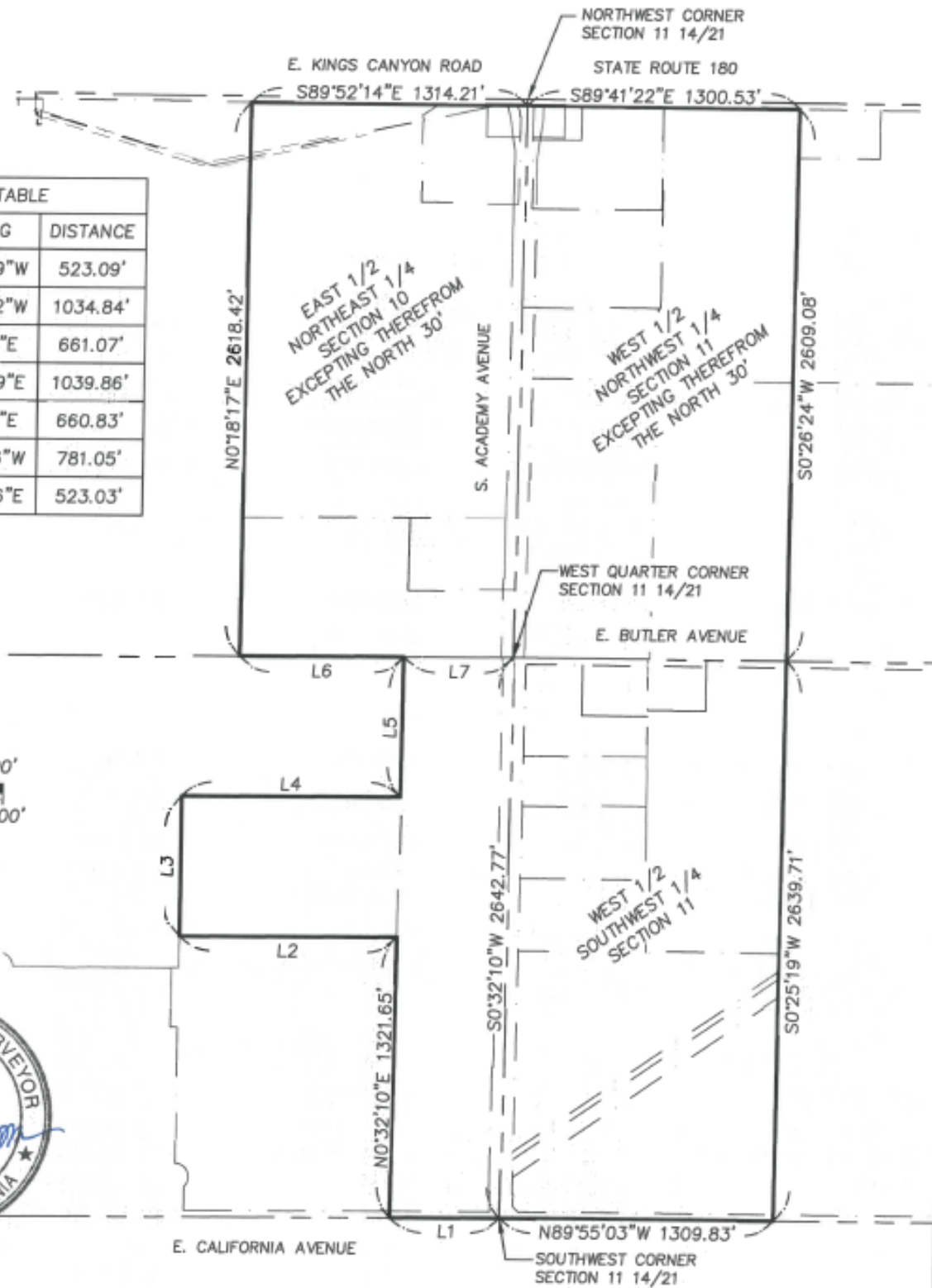


**Appendix A: Map of Boundaries of the Sanger EIFD  
(consistent with North Academy Corridor Annexation Area)**

LINE TABLE		
LINE	BEARING	DISTANCE
L1	S89°45'09"W	523.09'
L2	S89°46'52"W	1034.84'
L3	N0°06'11"E	661.07'
L4	N89°47'49"E	1039.86'
L5	N0°32'18"E	660.83'
L6	S89°48'46"W	781.05'
L7	N89°48'46"E	523.03'



**Yamabe & Horn Engineering, Inc.**  
 CIVIL ENGINEERS • LAND SURVEYORS  
 2005 N. BURL AVENUE SUITE 101 FRESNO, CA 93727  
 TEL: (559) 244-3122 WEBSITE: YANDHEVOR.COM

PROJECT TITLE	<b>ANNEXATION EXHIBIT</b>
SHEET DESCRIPTION	<b>NORTH ACADEMY CORRIDOR ANNEXATION</b>

Date:	06/11/21
Scale:	As Noted
YH Job No.	21-221
Sheet No.	1
of	1 Sheets